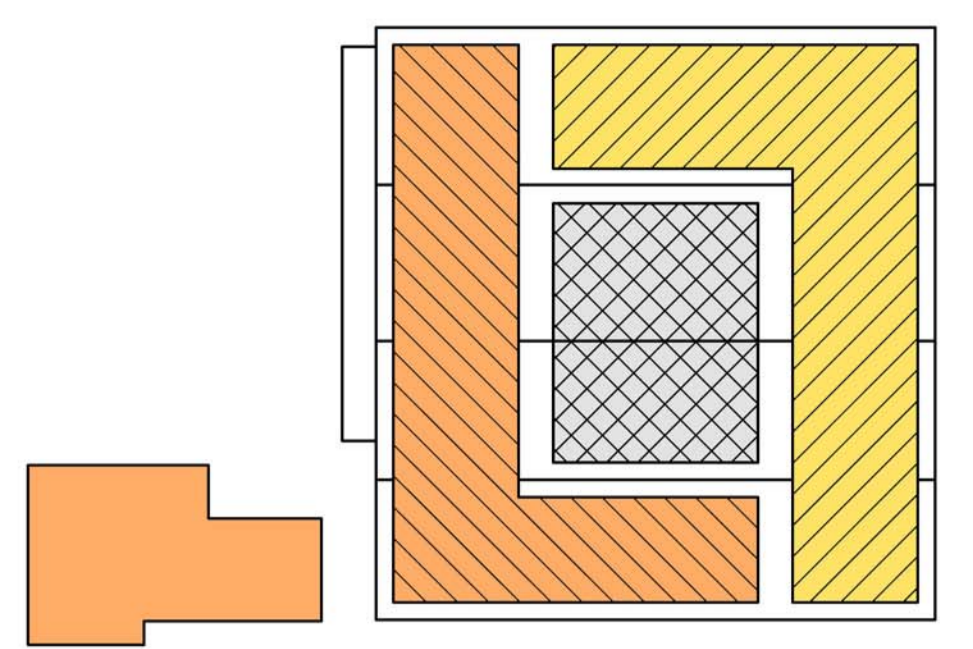
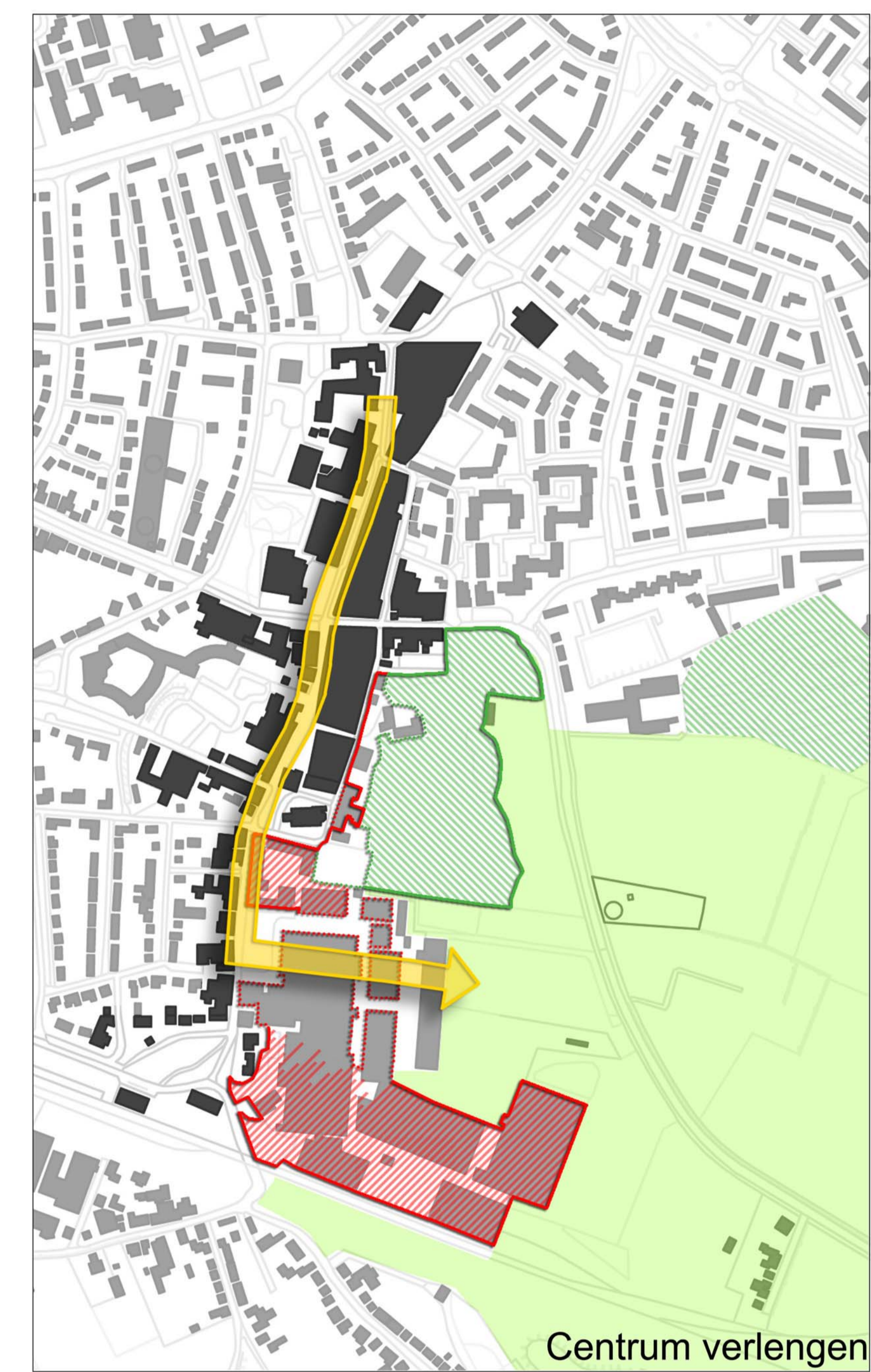
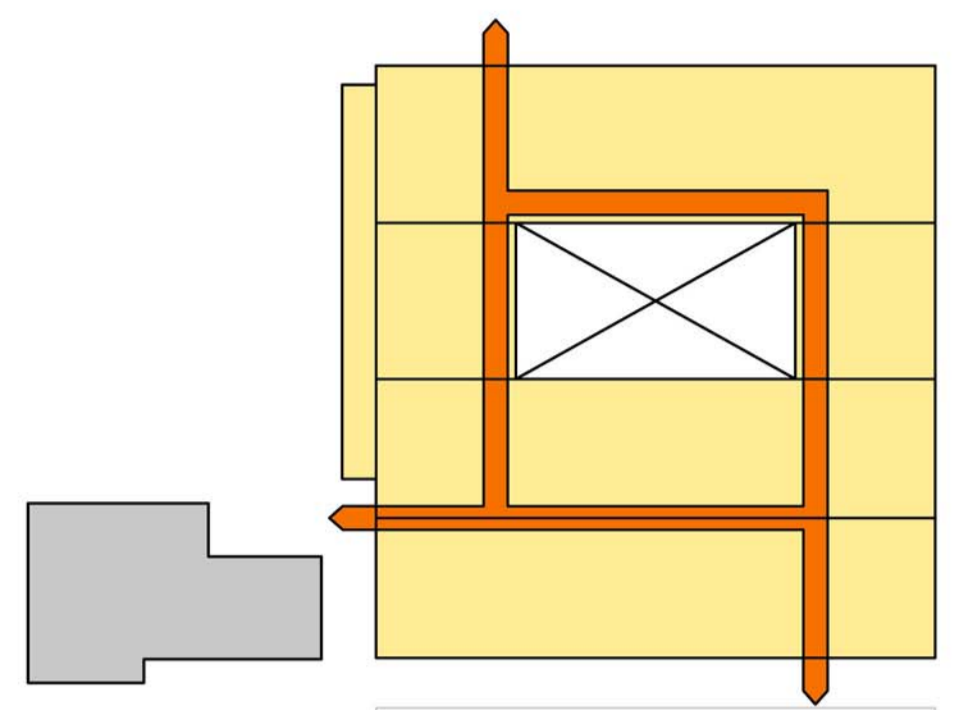


Turmacfabriek Zevenaar

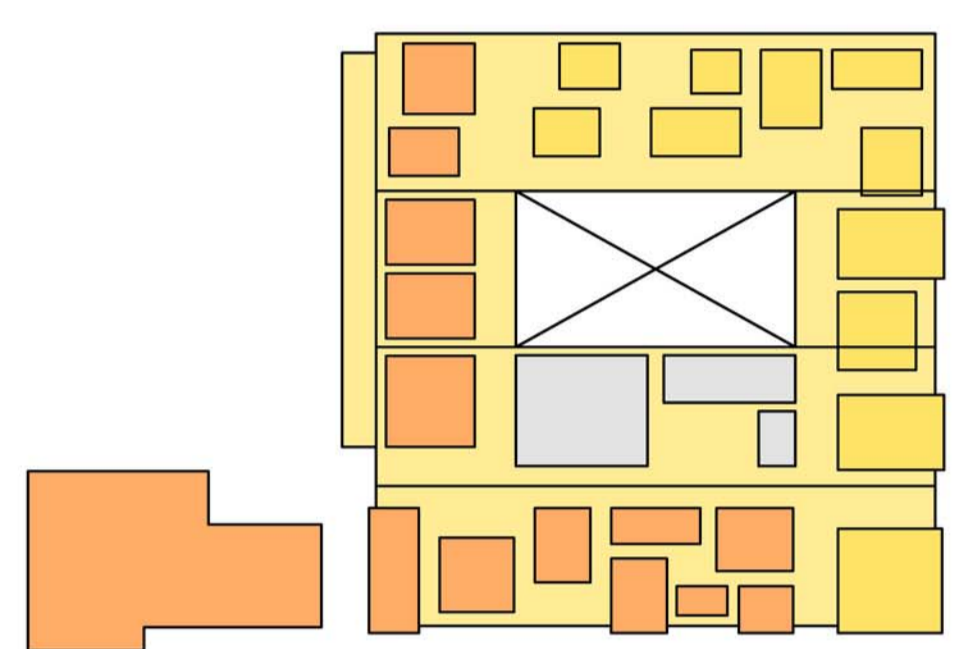
Renovatie tot gemeentehuis en cultureel centrum



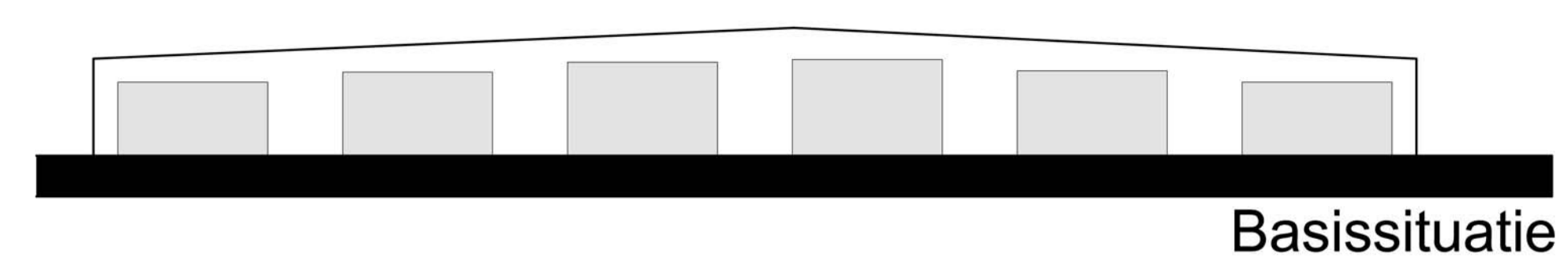
Functies langs de gevels



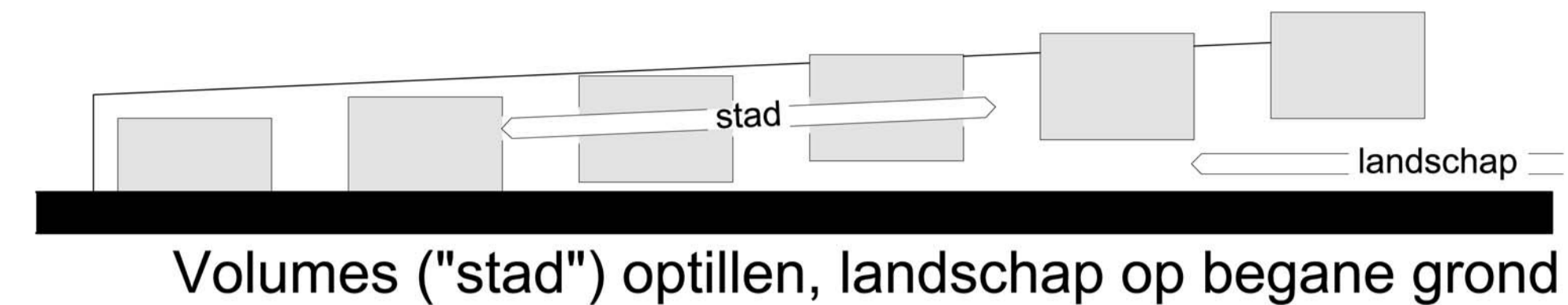
Entrees en routing



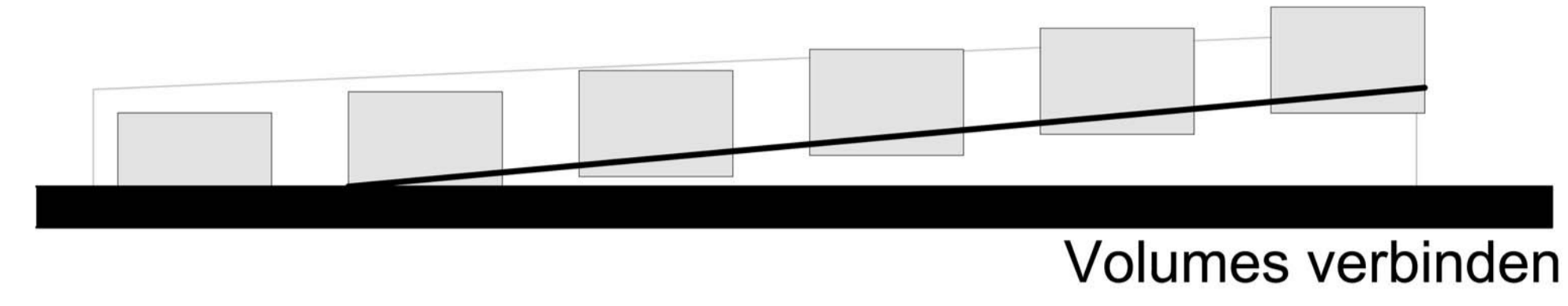
Een wijk in het gebouw



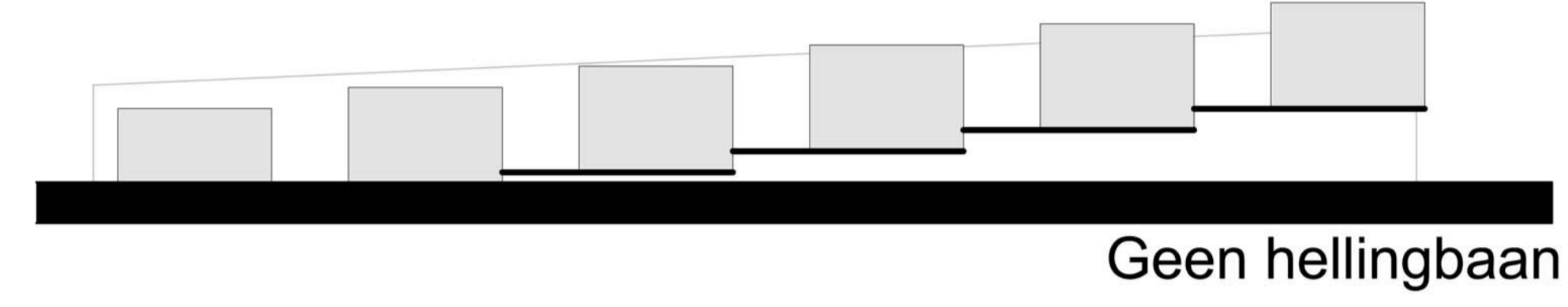
Basissituatie



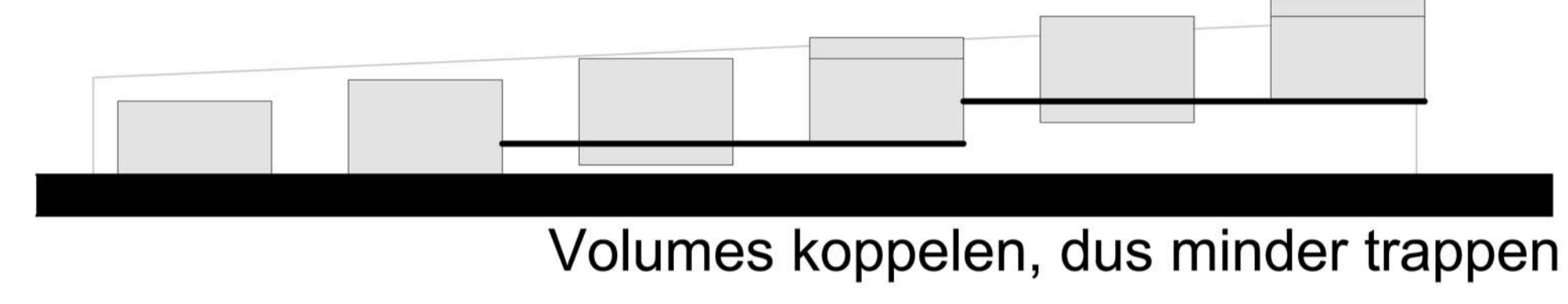
Volumes ("stad") optillen, landschap op begane grond



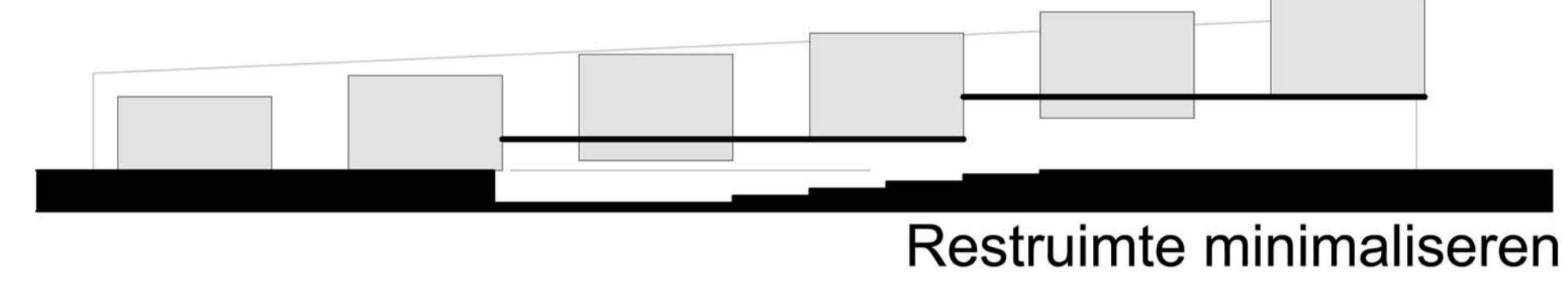
Volumes verbinden



Geen hellingbaan



Volumes koppelen, dus minder trappen



Restruimte minimaliseren

Concept

